

[illegible]

ITEM.	DATE.	DESCRIPTION.	INITIAL..

Capital Investment & Development
Flatts Lane Centre
Flatts Lane
Normanby
Middlesbrough
TS6 0SZ

Tel: (01642) 451578

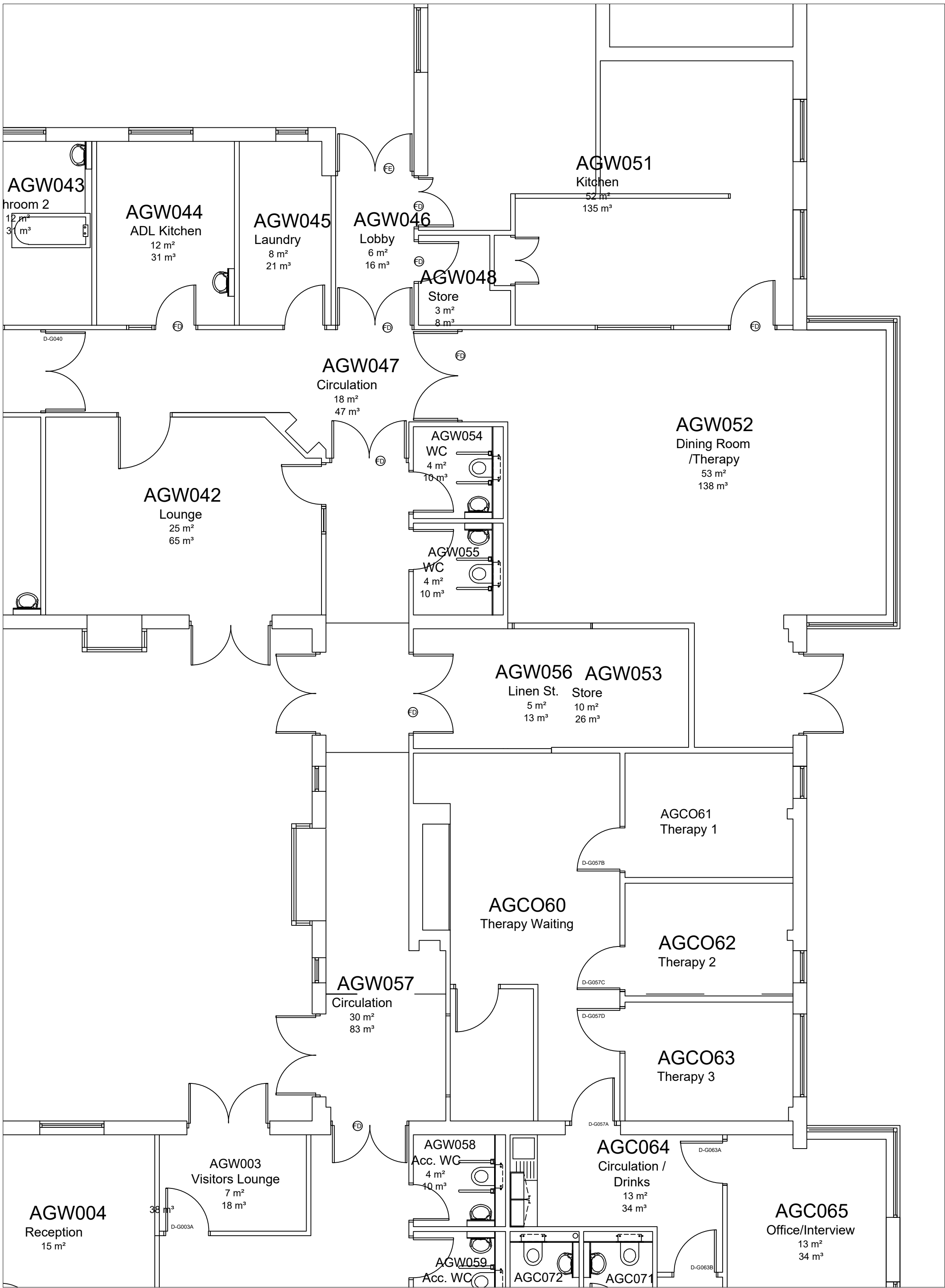
JOB No. _____

SCALE. NTS DATE. 11/11/24

DRAWN BY. CP CHECKED.

DRAWING No. REV.

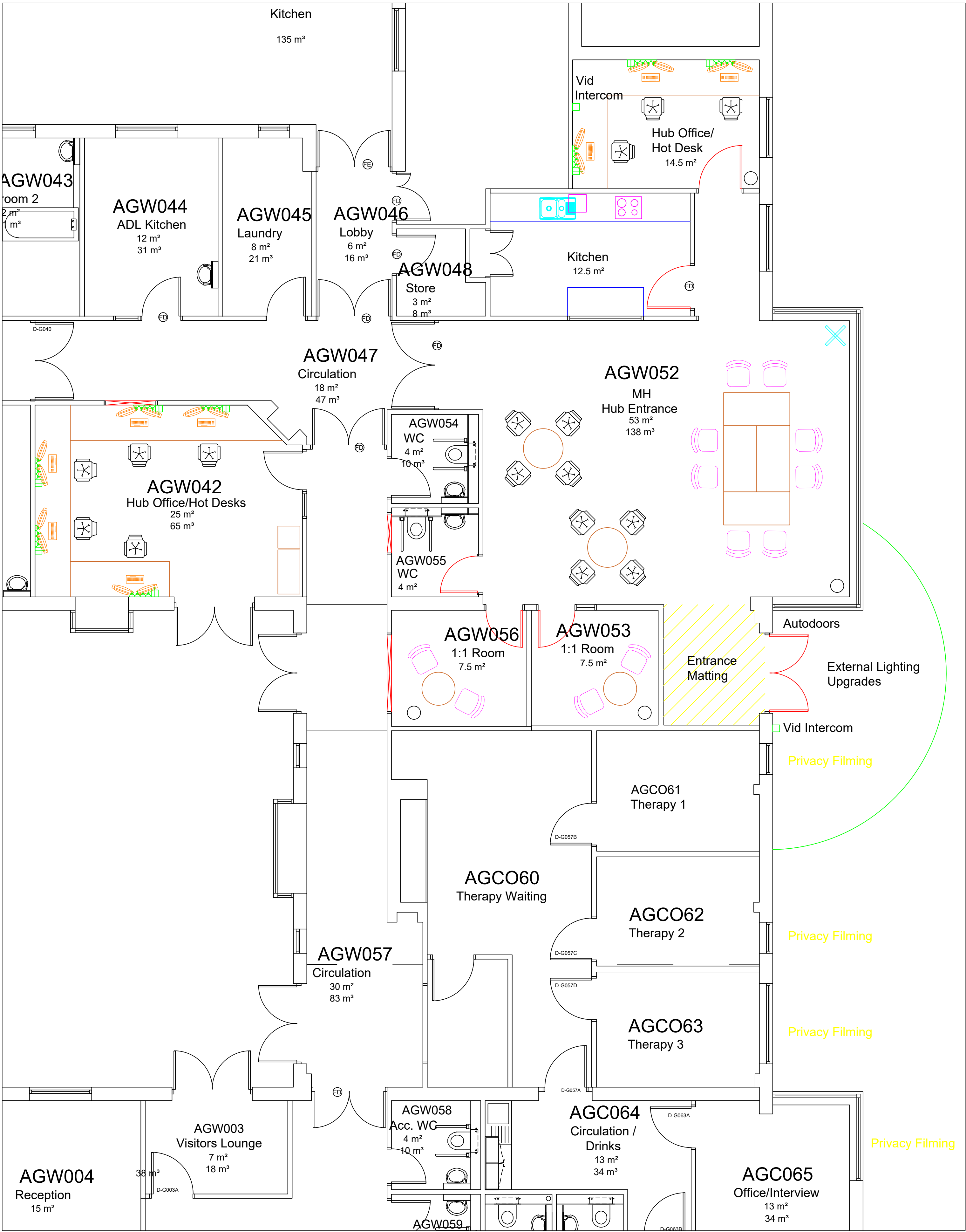
ACO-HUB-GA01 B



ACOMB EXISTING PLANTS

1. Form separate spaces between kitchen and back office.
2. Bench and provide data/power to serve office.
3. Partition store to form 2x 1:1 rooms. Remove and block off double door from corridor side and install 2x single leaf door to access from hub lobby, one to include side vision panel/screen window.
4. Alter operation of entrance doors to auto.
5. Install entrance matting.
6. Install video intercom to connect to hub office.
7. Upgrade external lighting covering the entrance.
8. Install privacy filming to existing therapy rooms + half privacy film front entrance and windows to hub.
9. Bench and provide data/power to serve rear hub office (AGW042).
10. Remove and reinstate IPS panelling to facilitate relocation of toilet and drop rails, block off doorway to corridor and reinstate door so accessible from hub side.
11. Upgrade internal lighting to facilitate installation of dimming function.

Fire safety expert to be consulted prior to execution. Hazard rooms, compartment lines and fire doors to be reviewed in full.



ACOMB PROPOSED PLAN NTS